

A = Courthouse Elevator

B = Annex Elevator

A TO ACCESS COURTHOUSE LEVEL 0, TAKE ELEV B TO LEVEL 1 & TRANSFER TO ELEV A, GO DOWN TO LEVEL 0

B TO ACCESS ANNEX LEVEL 0, TAKE ELEV A UP TO LEVEL 1 & TRANSFER TO ELEV B, GO DOWN TO LEVEL 0

Equipment Moving Route

UA Route

General Public/Visitors

Decision Point

Arts Court – OAG Transition Sign

Floor Directory

Wayfinding Directional

Daily Events Board (digital)

Building Directory

Exit-Only Staircase

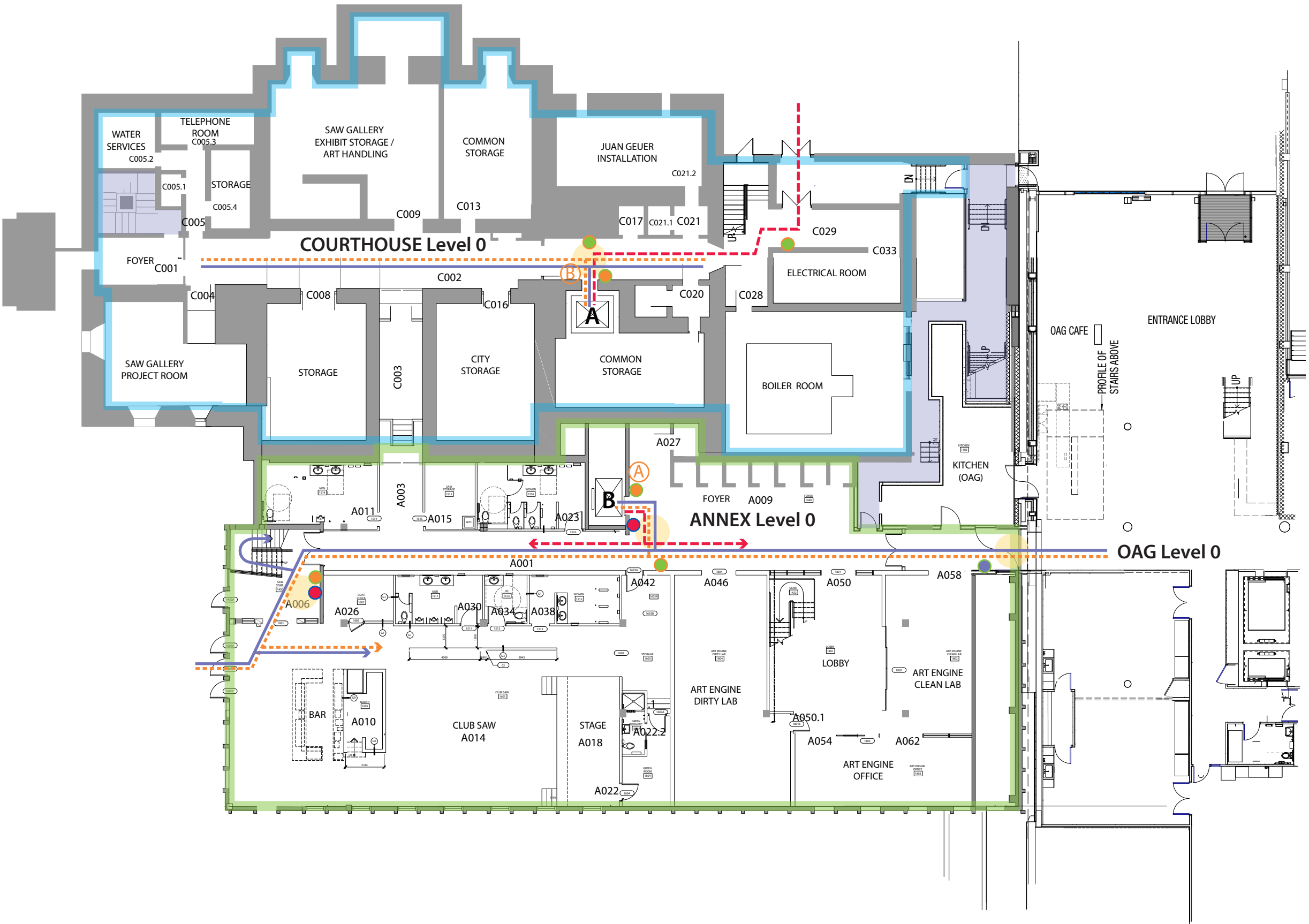
UofO Black Box Theatre

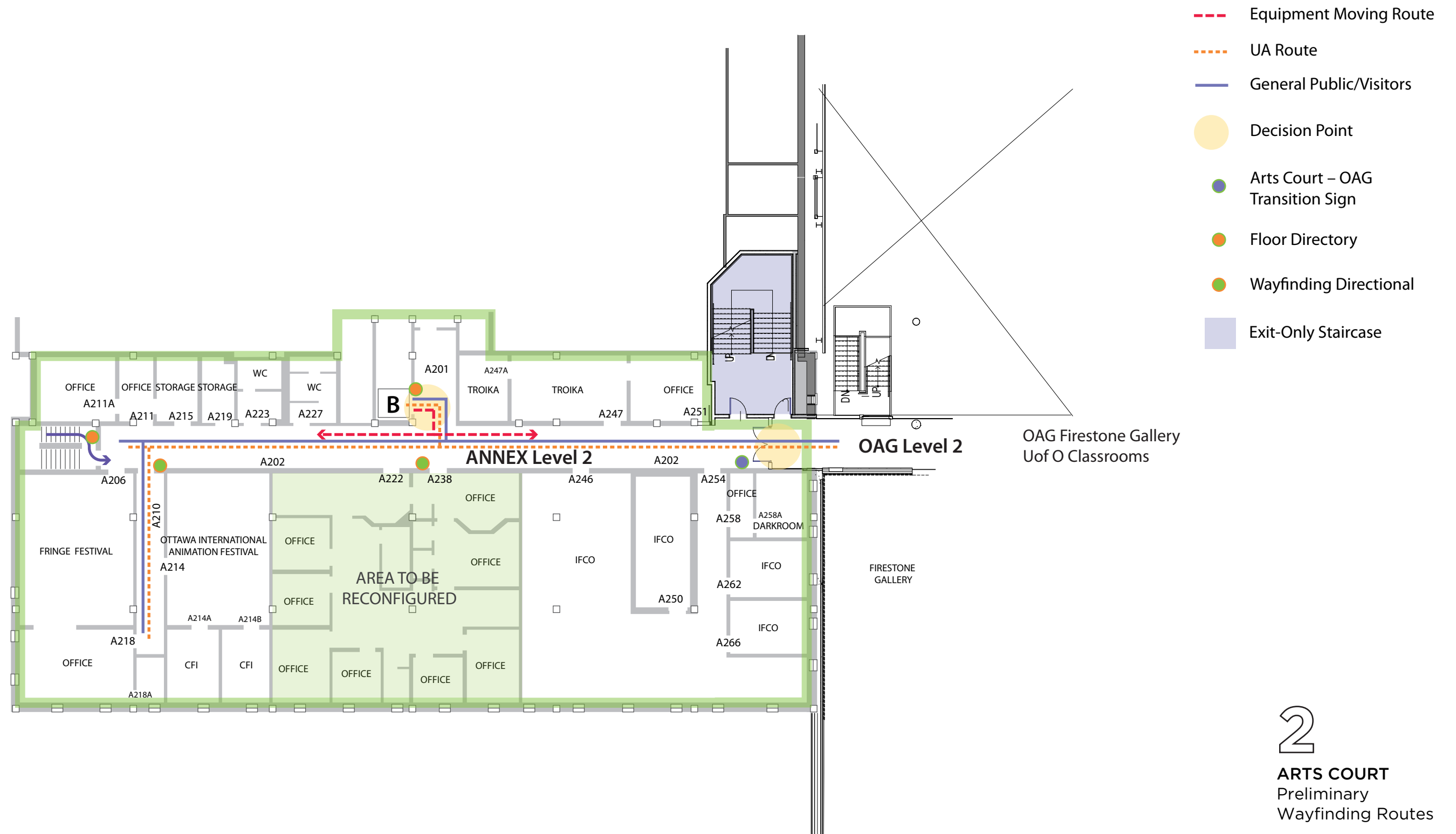


ARTS COURT
Preliminary
Wayfinding Routes

May 5, 2017

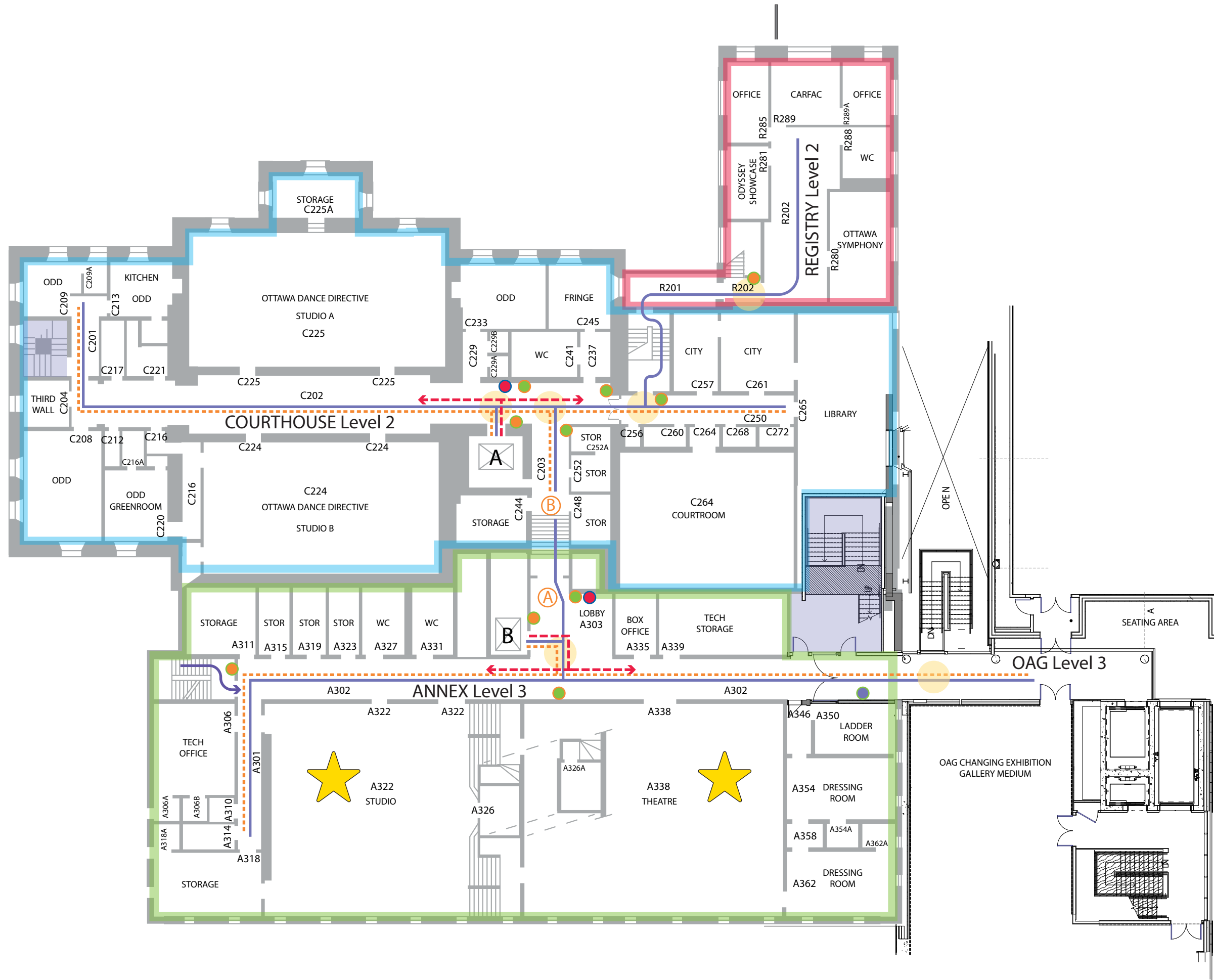
INTU
industrial design +
environmental graphics





2

ARTS COURT
 Preliminary
 Wayfinding Routes
 May 5, 2017



A = Courthouse Elevator

B = Annex Elevator

A TO ACCESS COURTHOUSE LEVEL 0, TAKE ELEV B TO LEVEL 1 & TRANSFER TO ELEV A, GO DOWN TO LEVEL 0

B TO ACCESS ANNEX LEVEL 0, TAKE ELEV A UP TO LEVEL 1 & TRANSFER TO ELEV B, GO DOWN TO LEVEL 0

--- Equipment Moving Route

--- UA Route

— General Public/Visitors

● Decision Point

● Arts Court – OAG Transition Sign

● Floor Directory

● Wayfinding Directional

● Daily Events Board (digital)

■ Exit-Only Staircase

OAG Changing Exhibitions
Multipurpose/Screening Room

2/3

ARTS COURT
Preliminary
Wayfinding Routes

May 5, 2017

INTU
industrial design +
environmental graphics